



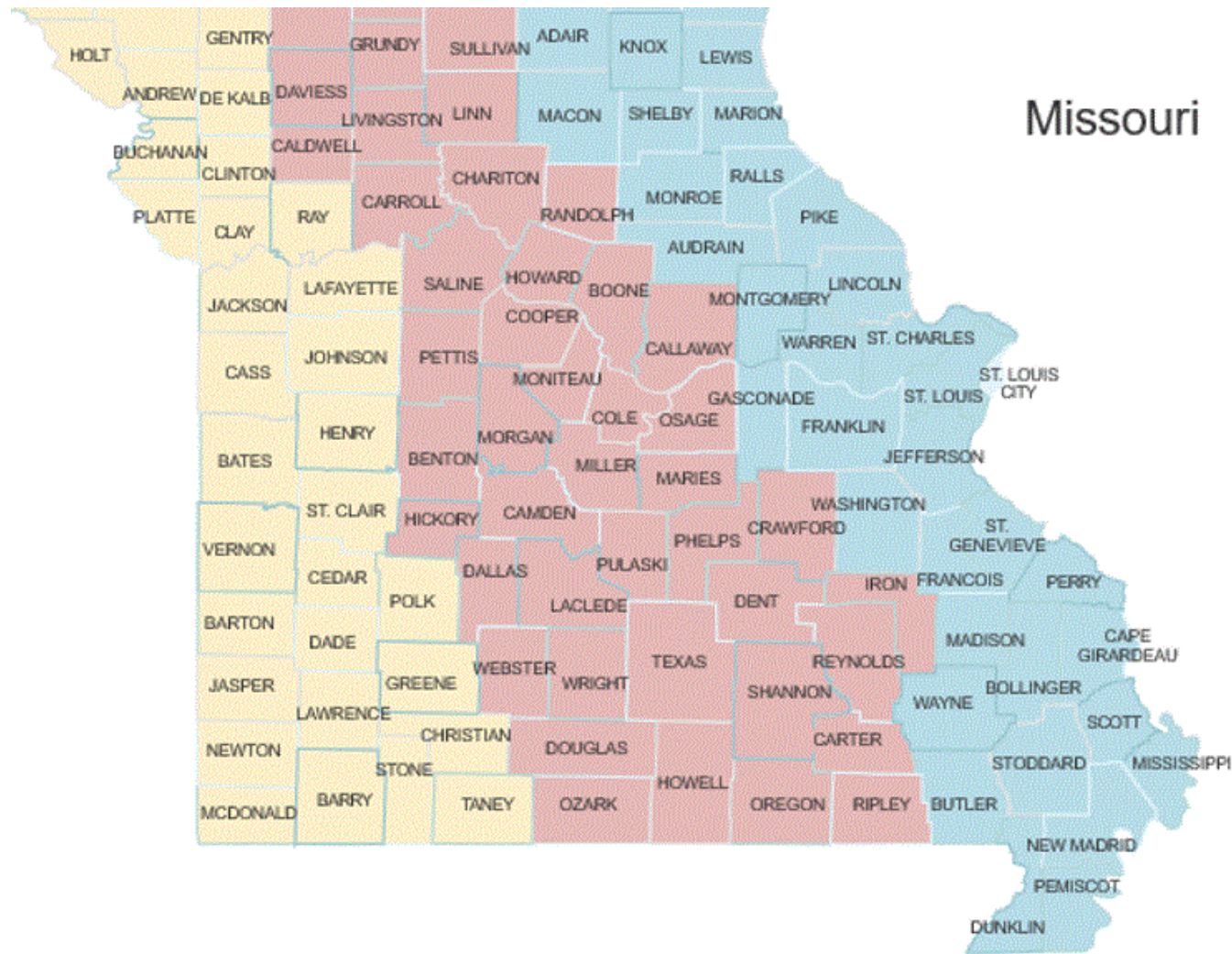
2020 VISION SURVEY RESULTS

REGIONAL COLLABORATION MEETING

JUNE 29, 2020

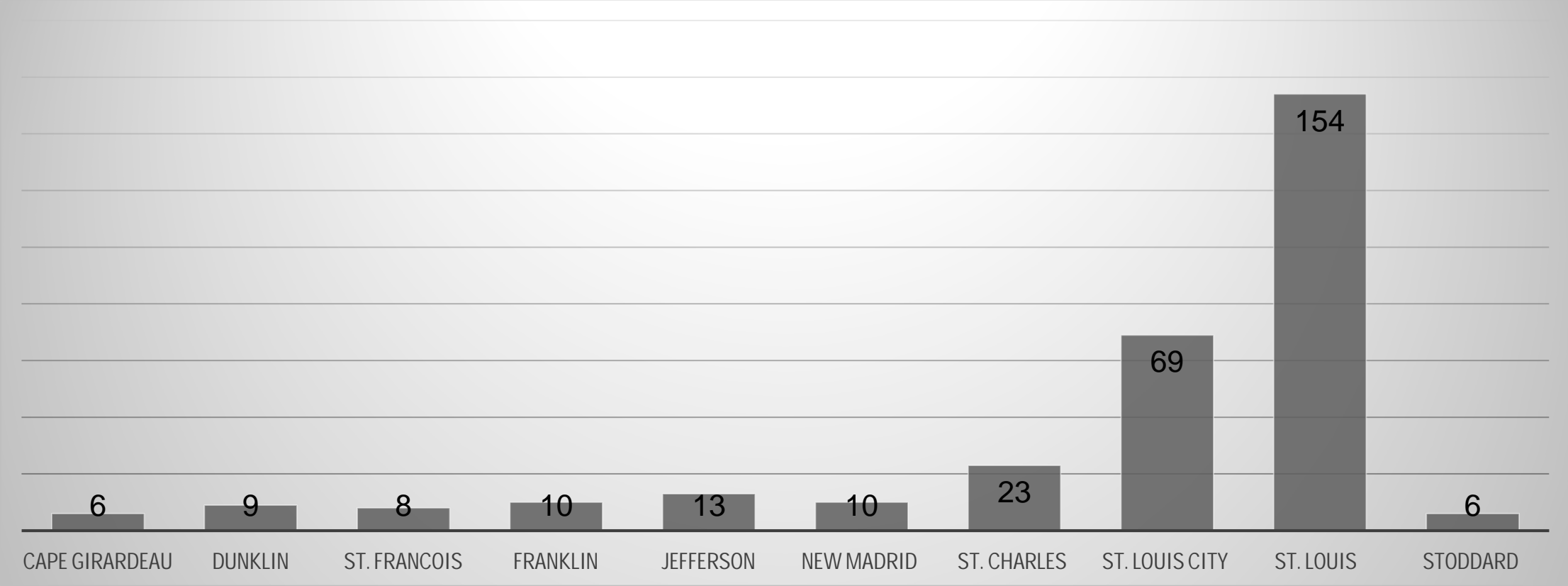


DISTRIBUTION OF SURVEYS

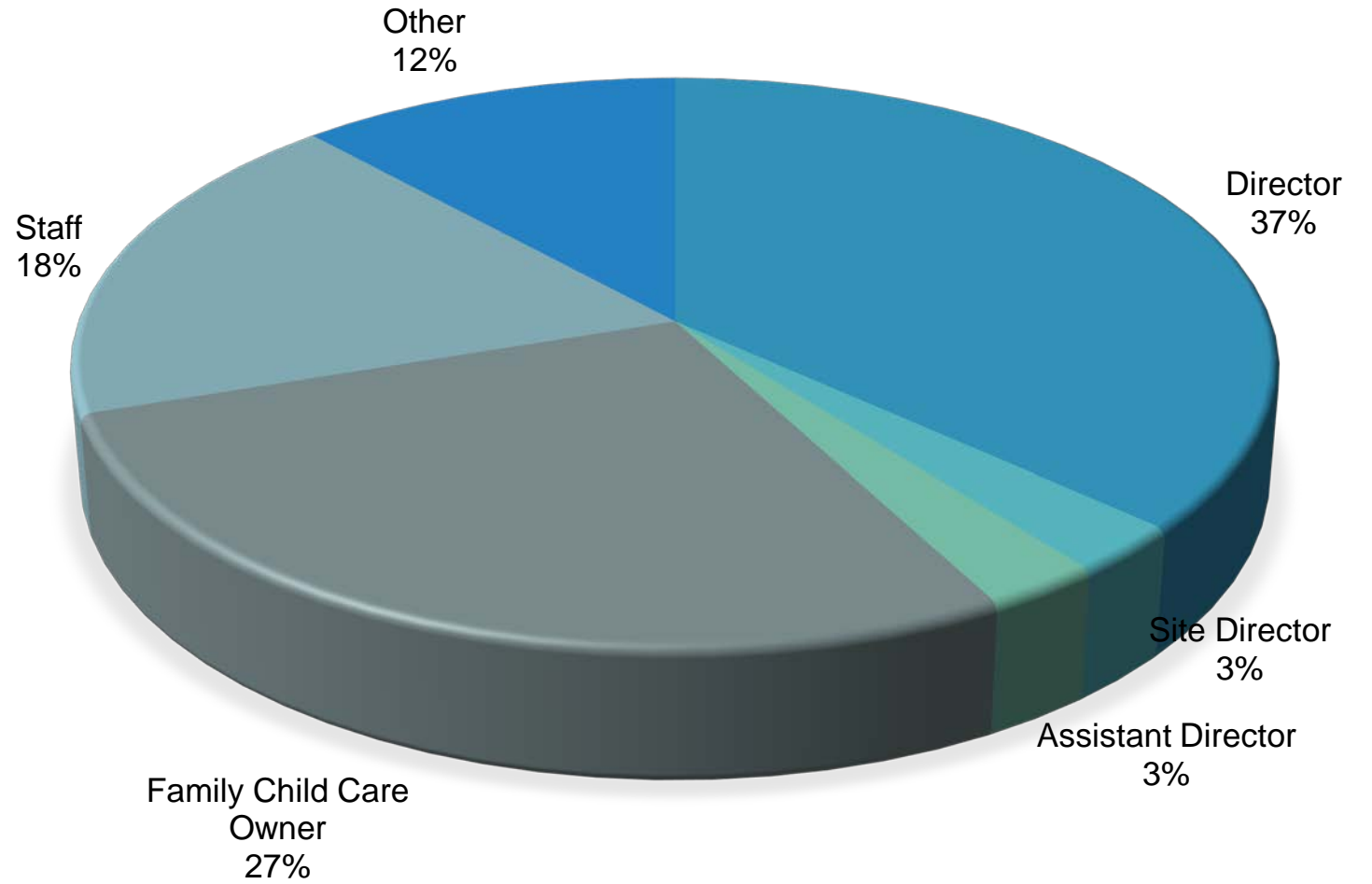


Missouri

COUNTIES



IAMA:



I WORK IN A:

- CHILD CARE CENTER/PRESCHOOL/GROUP HOME
62% of Respondents
- SCHOOL AGE & BEFORE/AFTER SCHOOL PROGRAM
8% of Respondents
- FAMILY CHILD CARE HOME
30% of Respondents

I WORK WITH THE FOLLOWING AGE GROUPS



- 0 - 12 mo. – 17%
- 13 - 24 mo. – 18%
- **25 - 36 mo. – 20%**
- **37 mo. - 5 yrs. – 22%**
- K - 12 yrs. – 12%
- Elementary – 7%
- Middle School – 3%
- High School – 1%

0 - 5 yrs. – 16%
6 - 10 yrs. – 12%
11 - 15 yrs. – 10%
16 - 20 yrs. – 10%
20+ yrs. – 49%

I HAVE BEEN A CHILD CARE
AND EARLY LEARNING
PROFESSIONAL FOR:

I HAVE BEEN A SCHOOL
AGE PROFESSIONAL FOR:

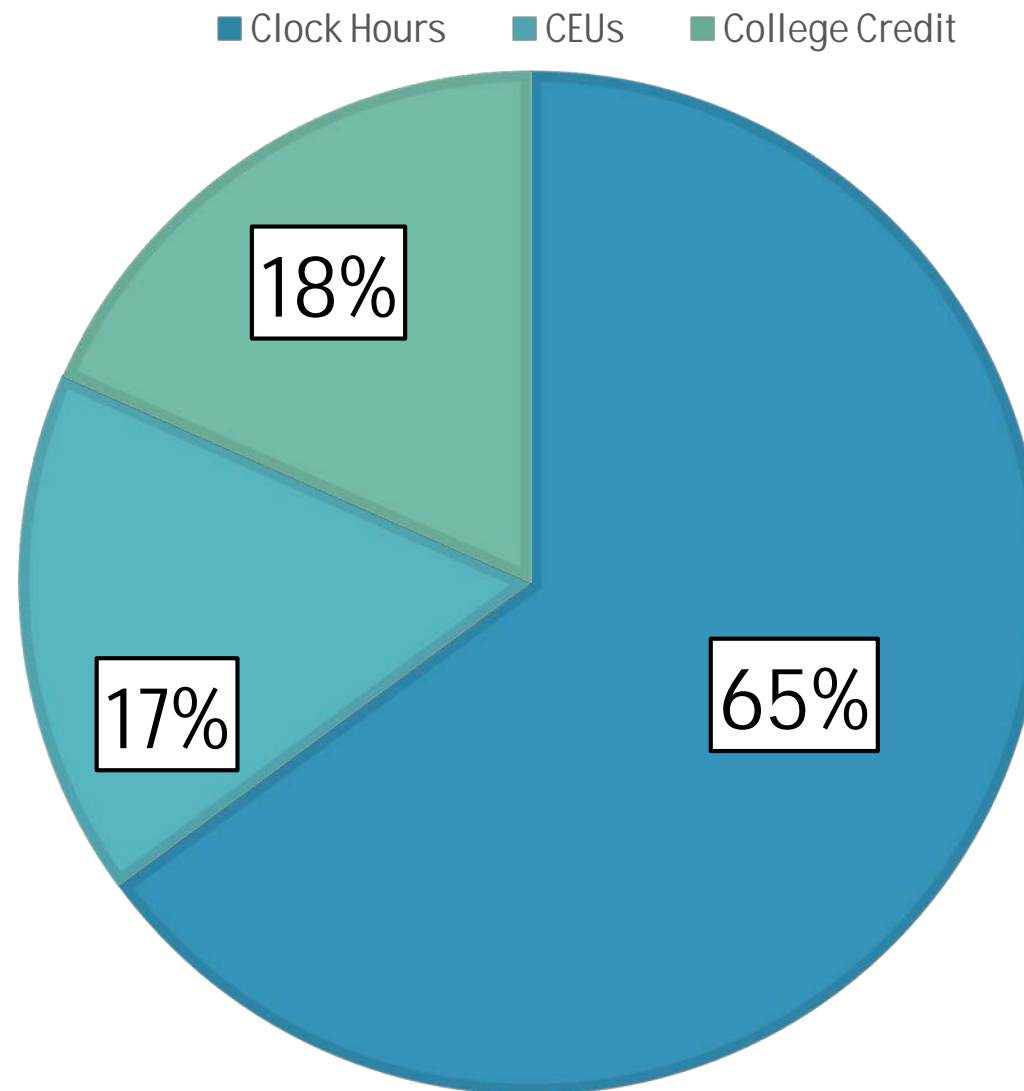
0-5 yrs. - 16%
6-10 yrs. - 11%
11-15 yrs. - 7%
16-20 yrs. - 8%
20+ yrs. - 28%



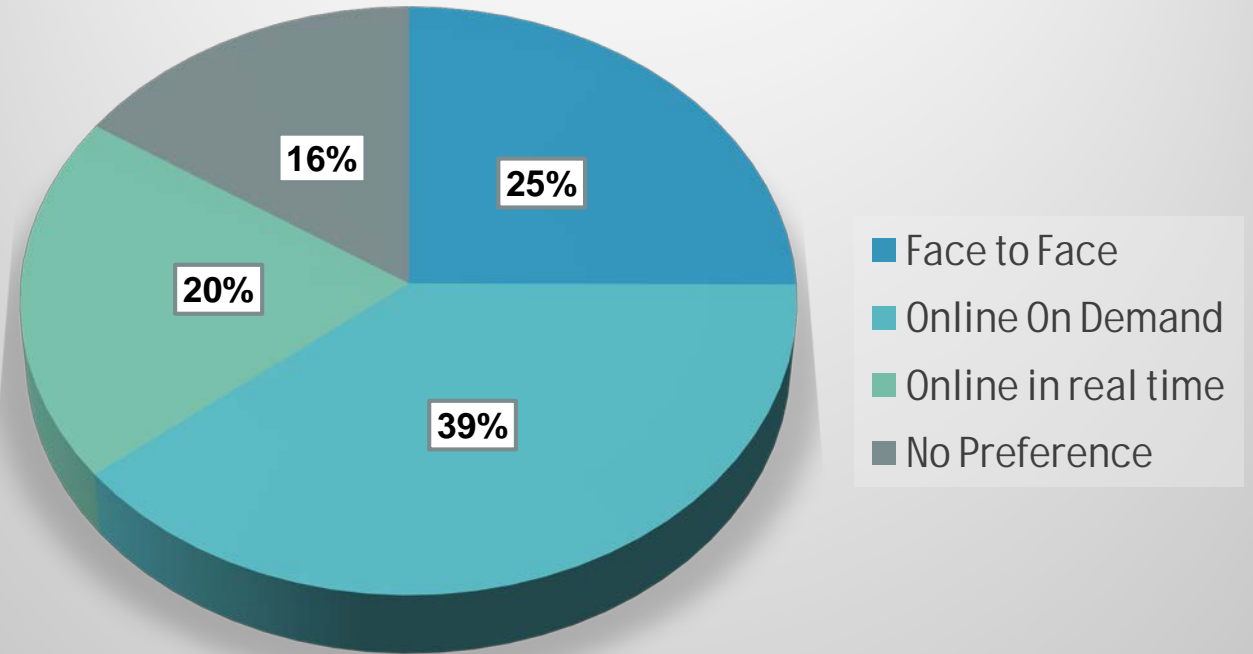
MY HIGHEST LEVEL OF EDUCATION IS:

- New to the field with little or no specialized training in Early Childhood Education 1%
- High school diploma/GED 21%
- Child Development Associate (CDA) Credential or some college 16%
- Associate degree in Early Childhood Education or closely related field 13%
- Bachelor's degree in Early childhood Education or closely related field 21%
- Graduate degree in Early Childhood Education or closely related field 15%

I AM LOOKING
FOR THESE
TYPES OF
TRAINING:



I PREFER TAKING TRAINING:



I PREFER PROFESSIONAL DEVELOPMENT OFFERED IN:

99% OF RESPONDENTS PREFER PROFESSIONAL
DEVELOPMENT TO BE DELIVERED IN ENGLISH

I PREFER TO
ATTEND
CHILD CARE
TRAINING IN
THESE
COUNTIES

St. Louis County

St. Louis City

St. Charles

Jefferson

New Madrid

Pemiscot & Cape Girardeau

I PREFER TO ATTEND SCHOOL AGE TRAINING IN THESE COUNTIES

St. Louis County

St. Louis City

St. Charles

Jefferson

Butler, Cape
Girardeau,
Franklin, & Scott

I AM WILLING TO TRAVEL THIS FAR (MILES) TO ATTEND TRAINING:



34% of respondents
are willing to travel up to
6-15 miles

22% of respondents
are willing to travel 16-25
miles

MY
PREFERRED
MONTHS TO
ATTEND
TRAININGS:

March

April

September

October

I PREFER ATTENDING FACE TO FACE TRAINING AND ONLINE IN REAL TIME TRAINING ON:

Evenings 6pm-9pm

- Monday
- Tuesday
- Wednesday
- Thursday

Mornings 8am-12pm

- Saturday

MY PREFERRED NUMBER OF PARTICIPANTS PER FACE TO FACE TRAINING IS:

5-10 preferred by 53% for respondents

MY PREFERRED NUMBER OF PARTICIPANTS PER ONLINE IN REAL TIME TRAINING IS:

5-10 preferred by 45% of respondents

I PREFER
TRAINING
FOLLOW UP
THROUGH:

Email: 80%

Text: 12%

Call: 8%

A photograph of a young teacher with long brown hair, wearing a teal shirt, smiling and interacting with a group of young children in a classroom. The children are sitting around a table, some holding paintbrushes, suggesting an art or craft activity. The background shows a colorful shelf with books and a large colorful flower decoration on the wall. The text 'TRAINING TOPICS FOR CHILD CARE EDUCATORS IN MISSOURI' is overlaid in white, bold, sans-serif font across the center of the image.

TRAINING TOPICS FOR CHILD
CARE EDUCATORS IN MISSOURI

CHILD AND YOUTH GROWTH AND DEVELOPMENT

Emotional Development : 13%

A light blue downward-pointing arrow is positioned to the right of the first bar, pointing towards the second bar.

Social Development : 12%

A light green downward-pointing arrow is positioned to the right of the second bar, pointing towards the third bar.

Temperament : 11%

LEARNING
ENVIRONMENT
AND
CURRICULUM

New Ideas for Learning
Activities 10%

Science/Discovery
Centers 8%

The Great
Outdoors/Play 8%

OBSERVATION AND ASSESSMENT

1. MEASURING CHILDREN'S PROGRESS: 36%
2. LEARNING ABOUT CHILDREN AS INDIVIDUALS: 35%
3. KEEPING RECORDS ON CHILDREN: 28%

FAMILIES AND COMMUNITIES

1. HOW TO WORK WITH FAMILIES: 25%
2. PLANNING FAMILY ENGAGEMENT ACTIVITIES: 22%
3. COMMUNITY RESOURCES: 21%

INTERACTIONS WITH CHILDREN AND YOUTH

Discipline, Behavior & Guidance: 12%

A light blue downward-pointing arrow is positioned on the right side of the teal box, pointing towards the green box below it.

Dealing with Emotion: 11%

A light green downward-pointing arrow is positioned on the right side of the green box, pointing towards the dark grey box below it.

Dealing with Trauma: 11%

PROGRAM PLANNING AND DEVELOPMENT

1. Grant Writing: 14%

2. Collaboration with the
Community: 14%

3. Time Management: 13%

PROFESSIONAL DEVELOPMENT AND LEADERSHIP

Stress Management for Caregivers: 22%

Effective Communication: 18%

Cultural Awareness: 17%

WELLNESS AND PREVENTION

Physical Activity in
Early Childhood: 22%

Staff Health and
Wellness: 21%

Child Nutrition:
19%



LEADERSHIP DEVELOPMENT

1. POSITIVE ATTITUDES: 38%
2. HR/RETENTION/EMPLOYEE
ENGAGEMENT: 25%
3. ACCOUNTING: 19%
4. BUSINESS COACHING: 18%

THANK YOU!

JONNI MCCASLIN

DIRECTOR OF TRAINING, CHILD CARE AWARE® OF MISSOURI

JONNI@MO.CHILDCAREAWARE.ORG