



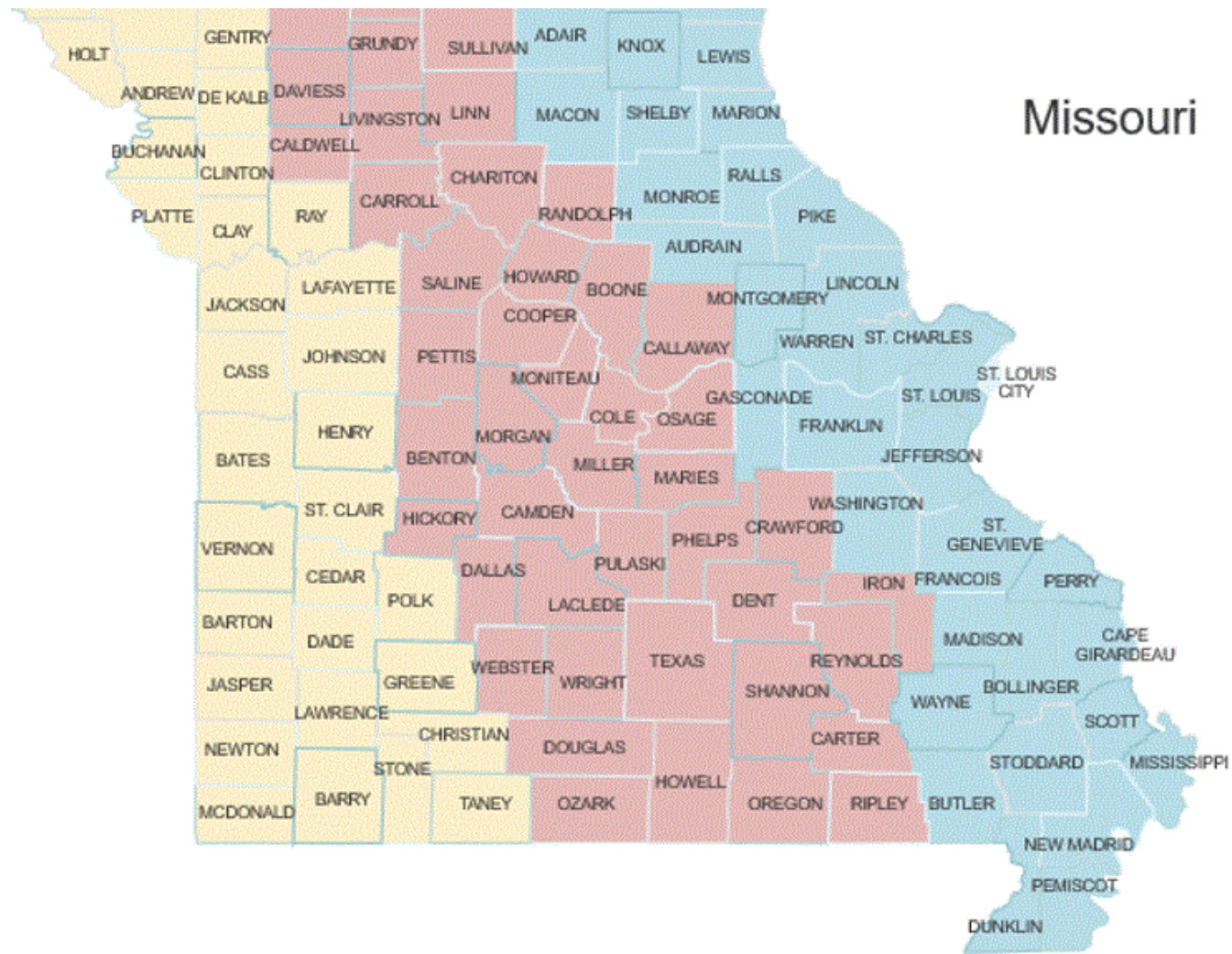
2020 VISION SURVEY RESULTS

REGIONAL COLLABORATION MEETING

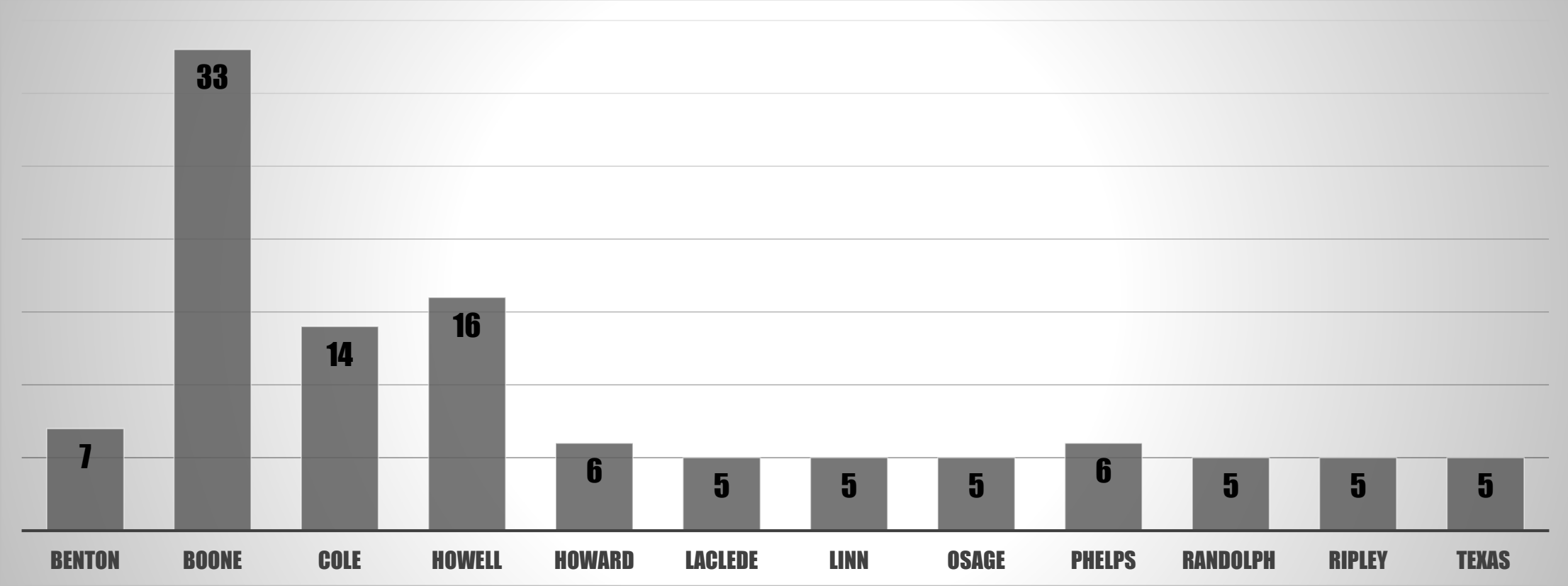
JUNE 26, 2020



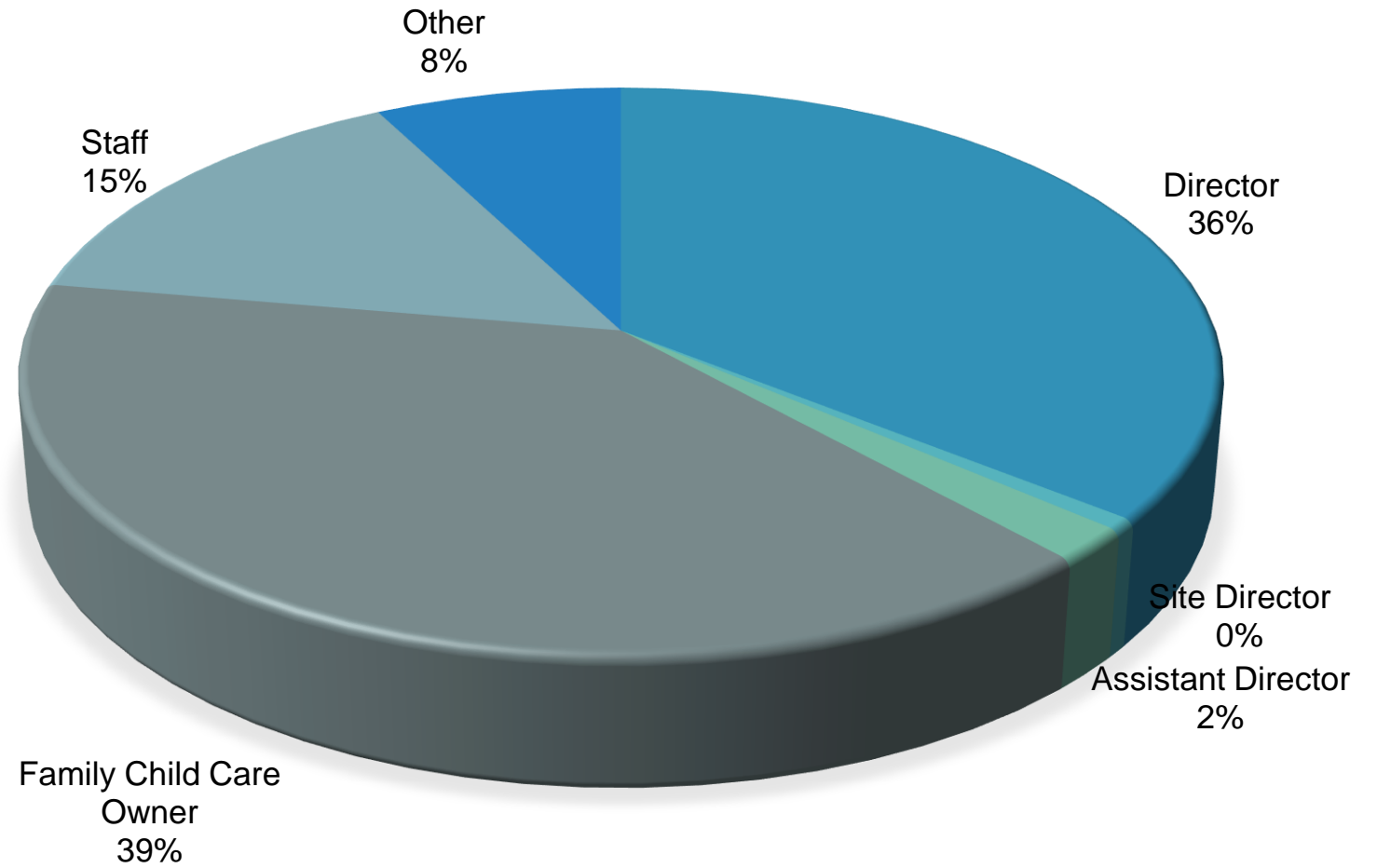
DISTRIBUTION OF SURVEYS



COUNTIES



I AM A:



I WORK IN A:

- **CHILD CARE CENTER/PRESCHOOL/GROUP HOME**
53% of Respondents
- **SCHOOL AGE & BEFORE/AFTER SCHOOL PROGRAM**
7% of Respondents
- **FAMILY CHILD CARE HOME**
40% of Respondents

I WORK WITH THE FOLLOWING AGE GROUPS



- **0 - 12 mo. – 18 %**
- **13 - 24 mo. – 18%**
- **25 - 36 mo. – 20%**
- **37 mo. - 5 yrs. – 22%**
- **K - 12 yrs. – 15%**
- **Elementary – 6%**
- **Middle School – 2%**
- **High School – .6%**

0 - 5 yrs. – 18%
6 - 10 yrs. – 13%
11 - 15 yrs. – 13%
16 - 20 yrs. – 11%
20+ yrs. – 43%

**I HAVE BEEN A CHILD CARE
AND EARLY LEARNING
PROFESSIONAL FOR:**

**I HAVE BEEN A SCHOOL
AGE PROFESSIONAL FOR:**

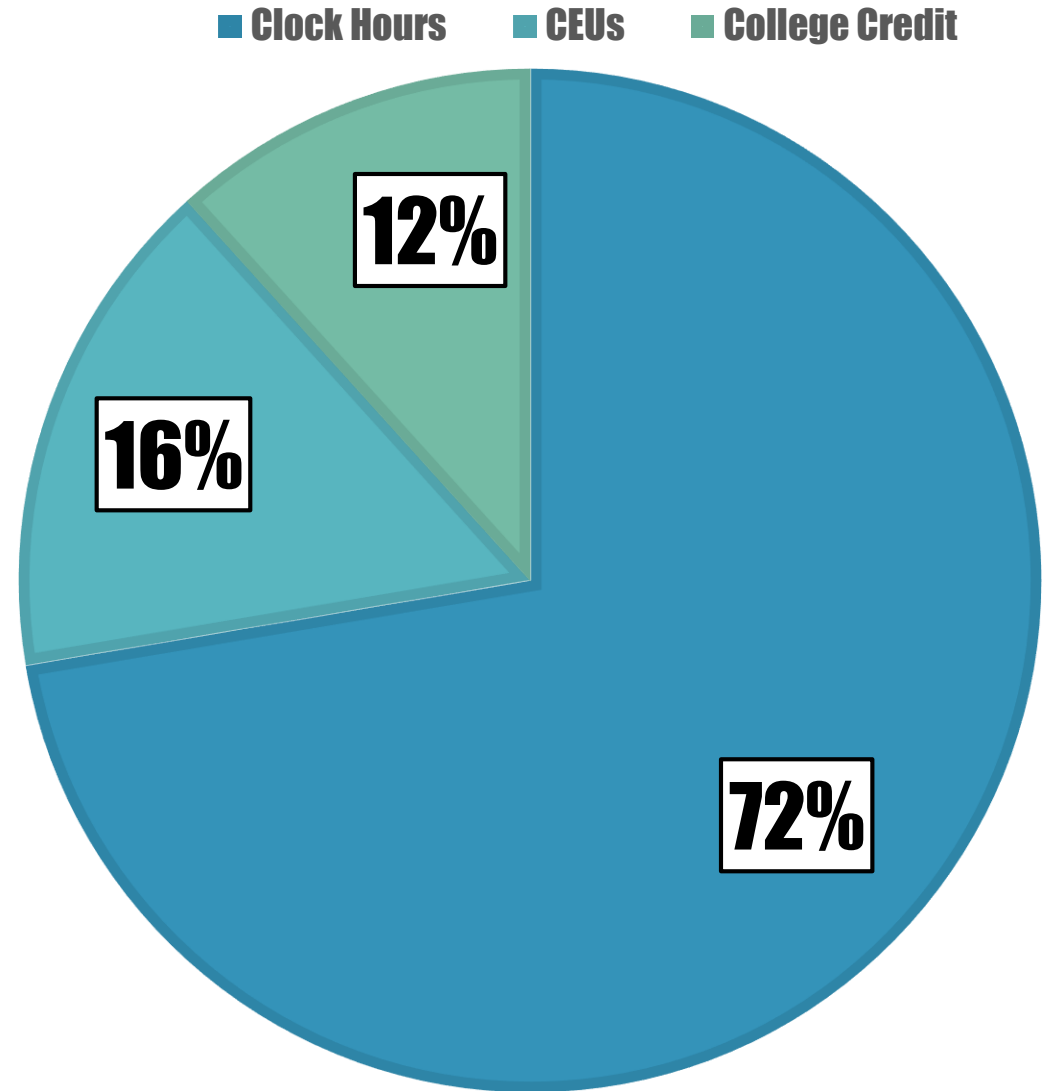
0-5 yrs. - 20%
6-10 yrs. - 9%
11-15 yrs. - 6%
16-20 yrs. - 6%
20+ yrs. - 26%



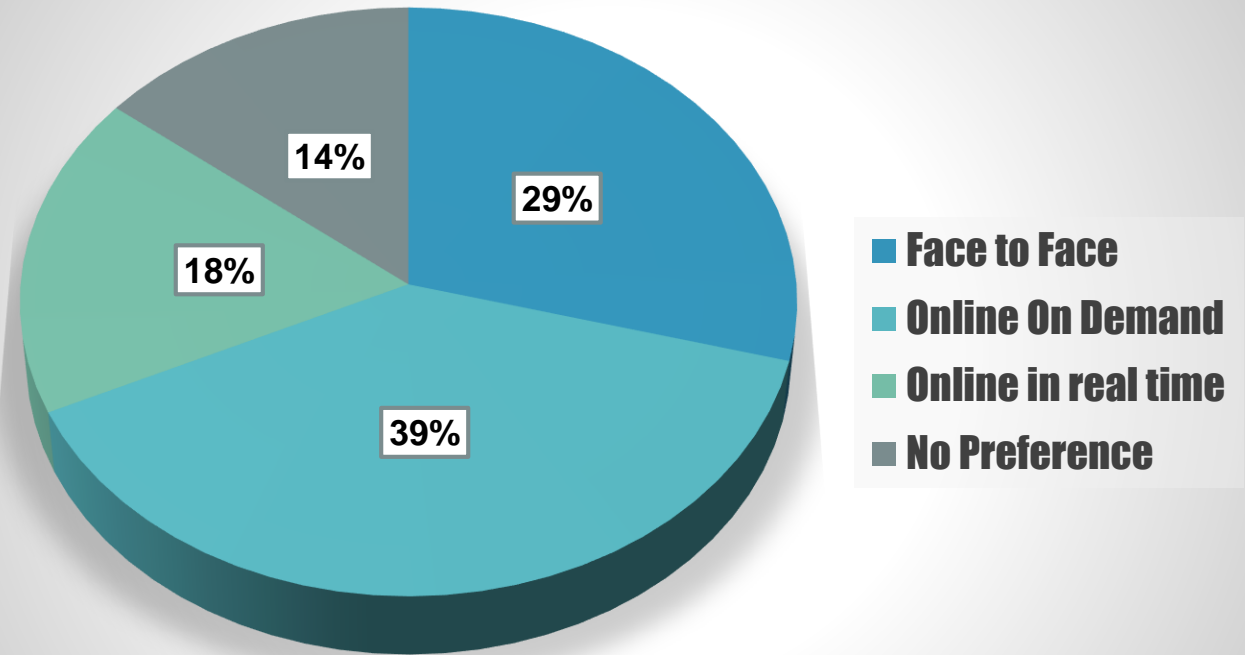
MY HIGHEST LEVEL OF EDUCATION IS:

- **New to the field with little or no specialized training in Early Childhood Education** 0%
- **High school diploma/GED** 32%
- **Child Development Associate (CDA) Credential or some college** 16%
- **Associate degree in Early Childhood Education or closely related field** 15%
- **Bachelor's degree in Early childhood Education or closely related field** 20%
- **Graduate degree in Early Childhood Education or closely related field** 7%

I AM LOOKING FOR THESE TYPES OF TRAINING:



I PREFER TAKING TRAINING:



I PREFER PROFESSIONAL DEVELOPMENT OFFERED IN:

**100% OF RESPONDENTS PREFER PROFESSIONAL
DEVELOPMENT TO BE DELIVERED IN ENGLISH**

**I PREFER TO
ATTEND
CHILD CARE
TRAINING IN
THESE
COUNTIES**

Boone

Cole

Phelps

Pulaski

Howell, Benton & Laclede

I PREFER TO ATTEND SCHOOL AGE TRAINING IN THESE COUNTIES

Boone

Cole

**Benton &
Laclede**

I AM WILLING TO TRAVEL THIS FAR (MILES) TO ATTEND TRAINING:



**24% of respondents
are willing to travel up to
26-35 miles**

**22% of respondents
are willing to travel 6-15
miles and 16-25 miles**

**MY
PREFERRED
MONTHS TO
ATTEND
TRAININGS:**

March & April – 11%

October - 10%

September – 9%

I PREFER ATTENDING FACE TO FACE TRAINING AND ONLINE IN REAL TIME TRAINING ON:

Evenings 6pm-9pm

- **Monday**
- **Tuesday**
- **Wednesday**
- **Thursday**

Mornings 8am-12pm

- **Saturday**

MY PREFERRED NUMBER OF PARTICIPANTS PER FACE TO FACE TRAINING IS:

5-10 preferred by 68% for respondents

MY PREFERRED NUMBER OF PARTICIPANTS PER ONLINE IN REAL TIME TRAINING IS:

5-10 preferred by 53% of respondents

**I PREFER
TRAINING
FOLLOW UP
THROUGH:**

Email: 83%

Text: 13%

Call: 4%

A photograph of a young teacher with long brown hair, wearing a teal shirt, smiling warmly as she interacts with a group of young children. The children are seated around a table, some holding pencils, suggesting a learning or art activity. The background shows a classroom environment with colorful decorations and a bookshelf. The text 'TRAINING TOPICS FOR CHILD CARE EDUCATORS IN MISSOURI' is overlaid in large, bold, white capital letters across the center of the image.

**TRAINING TOPICS FOR CHILD
CARE EDUCATORS IN MISSOURI**

CHILD AND YOUTH GROWTH AND DEVELOPMENT

Emotional Development : 13%



Social Development : 12%



Temperament : 12%



What Children Learn from Play: 12%

**LEARNING
ENVIRONMENT
AND
CURRICULUM**

New Ideas for Learning Activities 10%

Circle Time Activities 9%

Getting Ready for Kindergarten 8%

Science/ Discovery Centers 8%

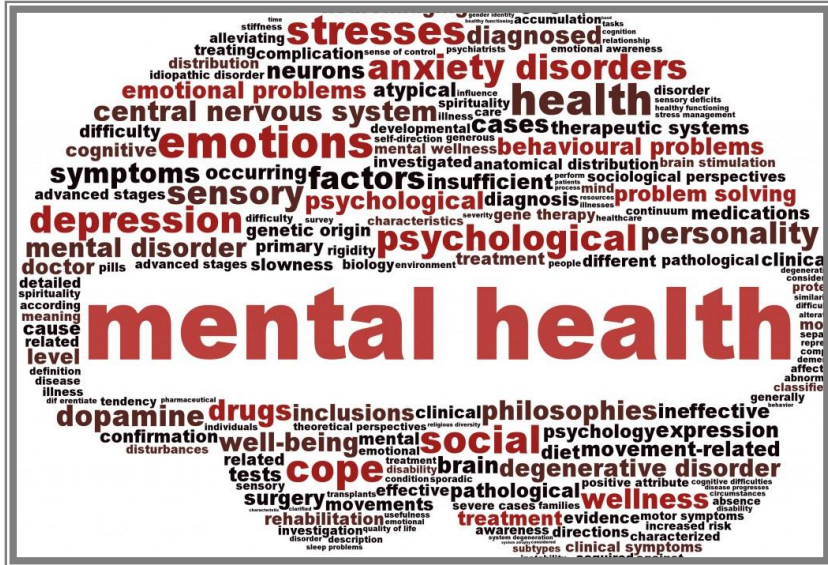
OBSERVATION AND ASSESSMENT

- 1. LEARNING ABOUT CHILDREN AS INDIVIDUALS: 35%**
- 2. MEASURING CHILDREN'S PROGRESS: 34%**
- 3. KEEPING RECORDS ON CHILDREN: 31%**

FAMILIES AND COMMUNITIES

- 1. COMMUNITY RESOURCES: 25%**
- 2. HOW TO WORK WITH FAMILIES: 25%**
- 3. PLANNING FAMILY ENGAGEMENT ACTIVITIES: 25%**

HEALTH AND SAFETY



1. CHILDREN'S HEALTH ISSUES: 17%

2. CHILDREN'S MENTAL HEALTH: 17%

3. FIRST AID/CPR: 16%

INTERACTIONS WITH CHILDREN AND YOUTH

Discipline, Behavior & Guidance: 16%



Dealing with Emotion: 14%



Infant/ Toddler Behavior: 12%

PROGRAM PLANNING AND DEVELOPMENT

1. Grant Writing: 14%

3. Time Management: 14%

**2. Administration/
Management: 13%**

PROFESSIONAL DEVELOPMENT AND LEADERSHIP

Stress Management for Caregivers: 24%

Effective Communication: 21%

Professionalism: 17%

WELLNESS AND PREVENTION

**Physical Activity in
Early Childhood: 26%**

**Child Nutrition:
21%**

**Staff Health and
Wellness 19%**



LEADERSHIP DEVELOPMENT

- 1. POSITIVE ATTITUDES: 45%**
- 2. ACCOUNTING: 25%**
- 3. HR/RETENTION/EMPLOYEE
ENGAGEMENT: 19%**

THANK YOU!

JONNI MCCASLIN

DIRECTOR OF TRAINING, CHILD CARE AWARE® OF MISSOURI

JONNI@MO.CHILDCAREAWARE.ORG